

# IFPSM World Summit

## The Future of Supply Management

Las Vegas, Nevada

September 21-23, 2009



1

# IFPSM World Summit The Future of Supply Management Concurrent Session A3

## *Association Governance*

**Bob Dye, FCMA, LLD**

**President**

**The Purchasing Management  
Association of Canada**



2

## Association Governance

- The processes through which the affairs of the Association are governed and managed to achieve the goals and objectives of the Association and deliver value to the members of the Association

## Association Governance

- Member Governed
- Staff Managed

## Association Governance

- Member = Shareholder
- Director = Director
- Officer = Officer
- Management = Management



Professionals in Supply Chain Management  
Enhanced. Exceptional.

5

## Association Governance

### Challenges

- Role Definition
- Director Recruitment
- Business Culture
- Measuring Governance Effectiveness



Professionals in Supply Chain Management  
Enhanced. Exceptional.

6

## Association Governance

### Role Definition

- **Board**
  - Determine the right things that the Association must do
- **Management**
  - Do the right things in the right way in a timely manner

## Association Governance

### Leadership Style

- The leadership style of the Association must be balanced with the **Board** responsible for establishing strategic direction and ensuring that policies and programs are continually focused on the purpose of the Association and **Management** responsible for the development and effective implementation and administration of policies and programs.

## Association Governance Leadership Style

### Specific Responsibilities – Board and Management

- |                                     |            |
|-------------------------------------|------------|
| ■ <b>Strategic Direction</b>        |            |
| ■ Establish and Approve             | Board      |
| ■ Provide Leadership in Development | Management |
| ■ Dispute Resolution                | Board      |
| ■ <b>Policy</b>                     |            |
| ■ Development                       | Management |
| ■ Approval                          | Board      |
| ■ Implementation                    | Management |
| ■ Administration                    | Management |
| ■ Effectiveness                     | Board      |
| ■ Dispute Resolution                | Board      |
| ■ <b>Program</b>                    |            |
| ■ Development                       | Management |
| ■ Approval                          | Board      |
| ■ Implementation                    | Management |
| ■ Administration                    | Management |
| ■ Effectiveness                     | Board      |
| ■ Dispute Resolution                | Board      |



Professionals in Supply Chain Management  
Enhanced. Exceptional.

9

## Association Governance

### Director Recruitment

- Profile the Position
- Desired Personal and Professional Attributes
- General Responsibilities
- Specific Responsibilities
- Time Commitment



Professionals in Supply Chain Management  
Enhanced. Exceptional.

10

# Association Governance

## Business Culture

- Association is not a business
- Association must operate following good business practices

# Association Governance

## Measuring Governance Effectiveness

- Strategic performance
- Director Effectiveness
- Operational Effectiveness

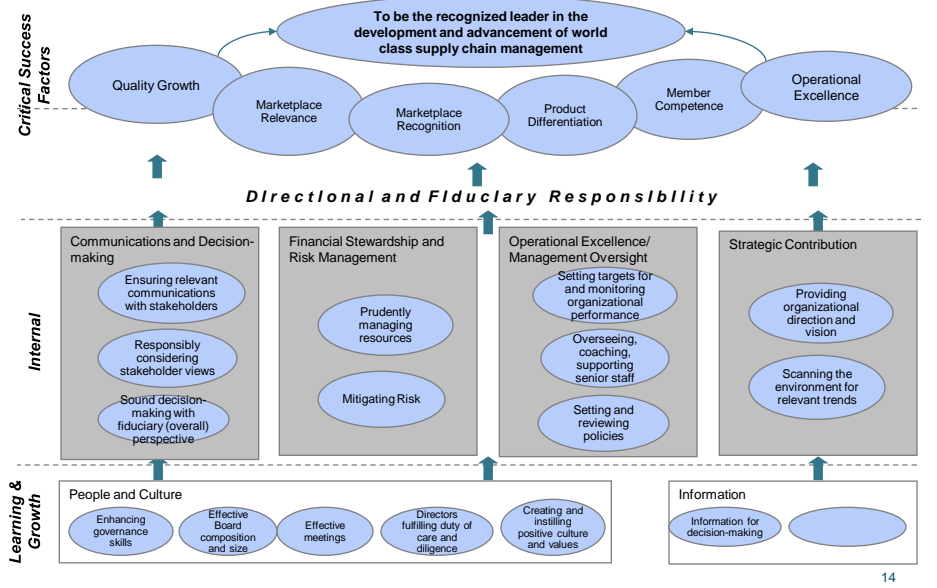
# Association Governance

## Measuring Governance Effectiveness

- Strategic performance
  - Marketplace Recognition
  - Market Relevance
  - Employer Satisfaction
  - Member Growth
  - Member Satisfaction
  - Member Value



## Association Governance Board of Directors Effectiveness



# Association Governance

## Operational Effectiveness

- Brand Management
- Program Management
- Financial Management
- Human Resource Capacity and Capability
- Technology Utilization and Management
- Stakeholder Communication



Professionals in Supply Chain Management  
Enhanced. Exceptional.

15

# Thank you

## Questions?



Professionals in Supply Chain Management  
Enhanced. Exceptional.

16